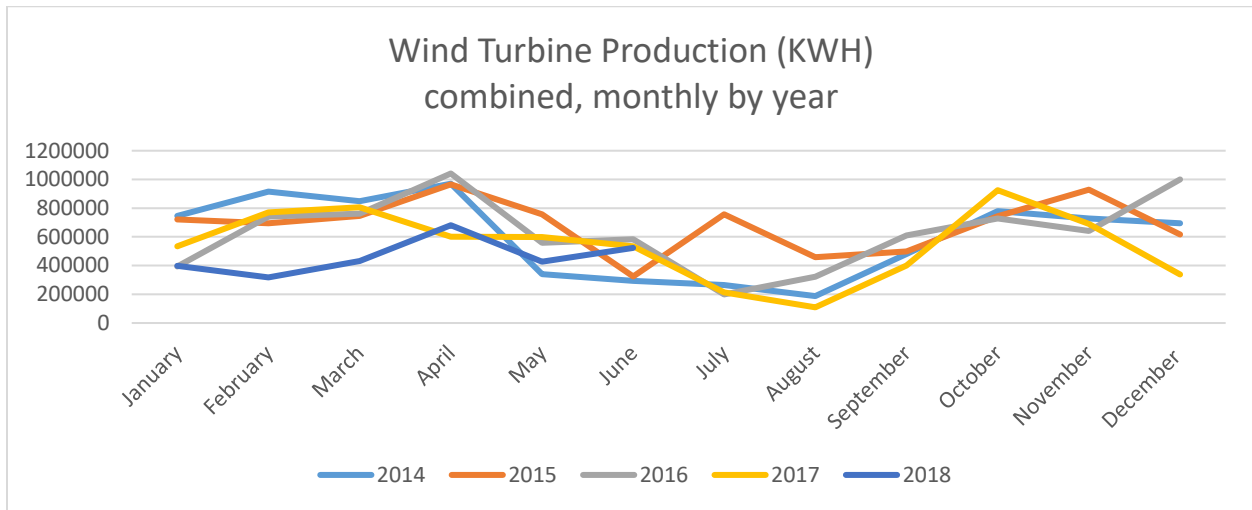




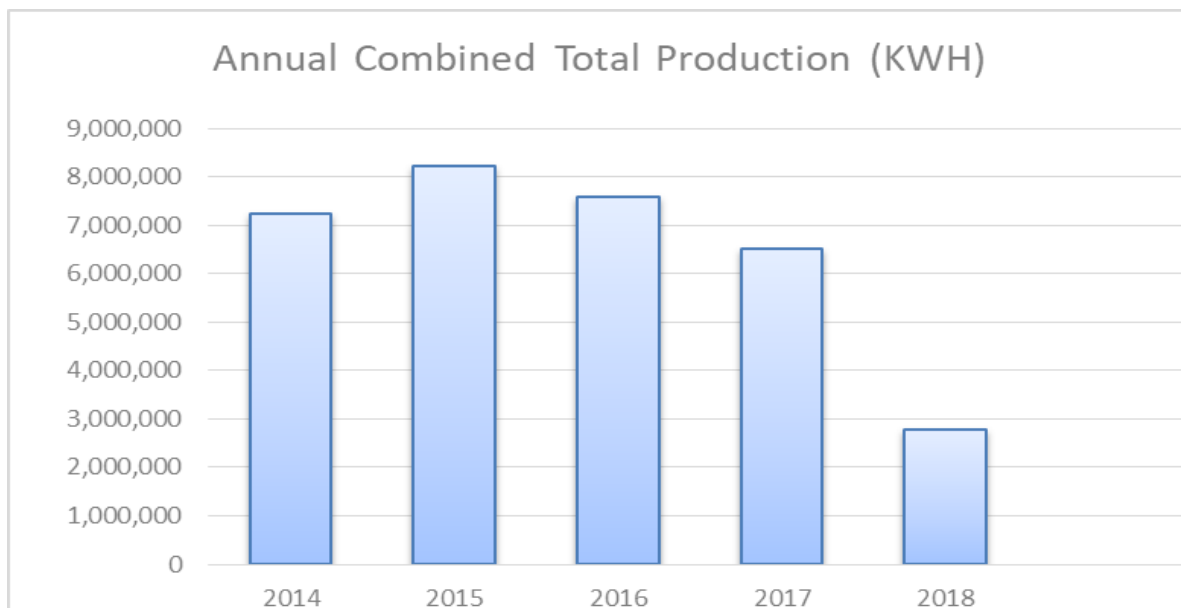
WILLMAR MUNICIPAL UTILITIES

June 2018 Wind Turbine Report



	Production (KWH)		Availability (%)		Total KWH	Major Outages
	#3	#4	#3	#4		
June 2018	249,292	274,114	90.4	91.3	523,406	
May 2018	209,088	218,131	94.6	96.9	427,219	
Apr. 2018	303,979	377,047	78.6	100.0	681,026	
Mar. 2018	389,456	42,709	93.6	6.9	432,165	#4 Blade Pitch Control Unit Failure
Feb. 2018	317,618	-	99.6	0.0	317,618	#4 Blade Pitch Control Unit Failure
Jan. 2018	398,844	-	92.0	0.0	398,844	#4 Blade Pitch Control Unit Failure
Dec. 2017	338,980	-	91.7	0.0	338,980	#4 Blade Pitch Control Unit Failure
Nov. 2017	404,496	286,351	94.7	73.7	690,847	
Oct. 2017	468,821	456,179	97.8	92.7	925,000	
Sep. 2017	192,873	207,337	62.2	67.4	400,210	#3 Control Software Malfunction #4 Hydraulic System Overheated
Aug. 2017	109,215	-	66.0	0.0	109,215	#3 Control Software Malfunction #4 Hydraulic System Overheated
July 2017	91,860	122,444	61.8	93.2	214,304	#3 Control Software Malfunction
June 2017	257,597	277,065	98.0	97.6	534,662	
2018 Total	1,868,277	912,001			2,780,278	

Month	2014	2015	2016	2017	2018	
January	745643	720369	393,477	534,867	398,844	
February	916093	695143	740,655	771,227	317,618	
March	848017	746045	761,028	806,936	432,165	
April	970215	965530	1,041,382	601,823	681,026	
May	340154	755889	557,947	598,108	427,219	
June	292744	324005	583,043	534,662	523,406	
July	264420	755889	199,043	214,304		
August	187490	457386	321,326	109,215		
September	480586	499215	609,004	400,210		
October	779328	744572	727,379	925,000		
November	728534	929609	640,522	690,847		
December	694570	616700	998,977	338,980		
Total	7,247,794	8,210,352	7,573,783	6,526,179	2,780,278	



Fun Fact: If you were to drive out west this summer on vacation. You may see what looks like smaller wind turbines. Just hanging out in the middle of nowhere. Those wind turbines were mostly used to pump water for livestock, back in farming's earlier days. Some are still functioning even today!