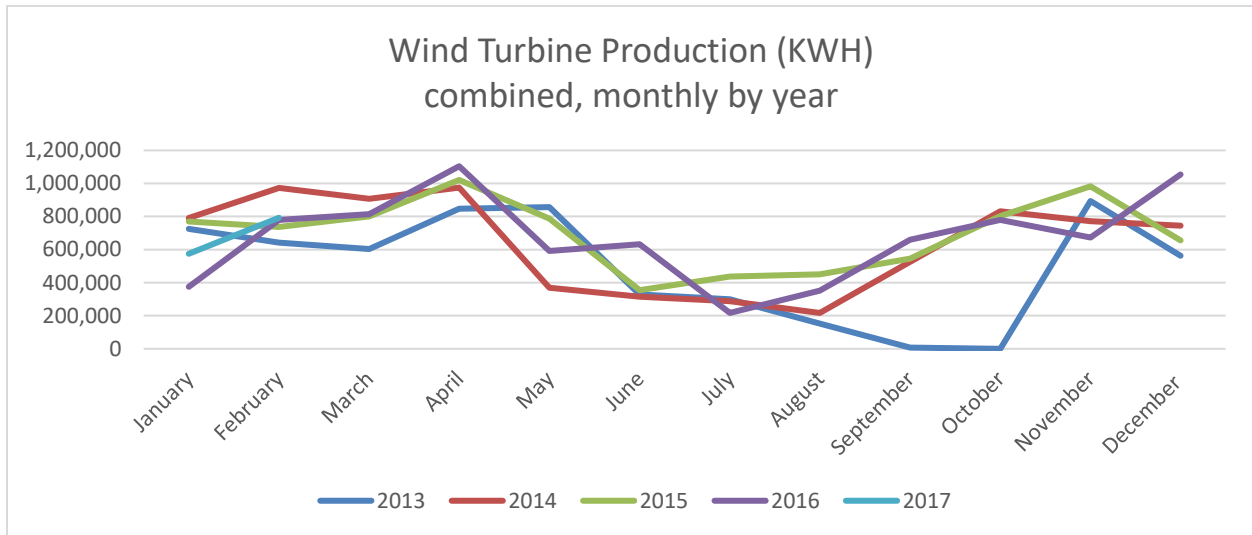




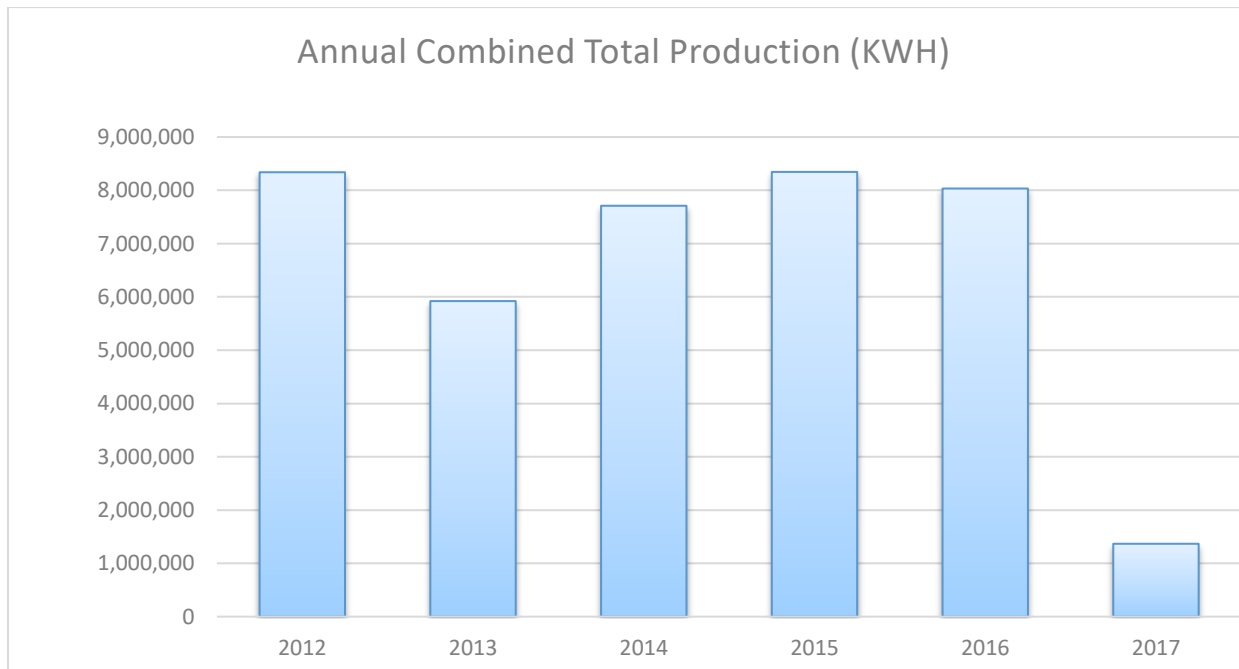
WILLMAR MUNICIPAL UTILITIES

February 2017 Wind Turbine Report



	Production (KWH)		Availability (%)		Total KWH	Major Outages
	#3	#4	#3	#4		
Feb. 2017	389,225	403,407	94.5	95.8	792,632	
Jan. 2017	254,342	320,589	77.4	91.3	574,931	
Dec. 2016	494,779	559,055	92.9	93.4	1,053,834	
Nov. 2016	308,832	364,948	87.4	98.7	673,780	
Oct. 2016	350,086	430,345	87.7	98.6	780,431	
Sep. 2016	320,139	339,728	94.3	94.8	659,867	
Aug. 2016	162,977	188,595	89.6	99.3	351,572	
July 2016	55,585	161,725	49.4	66.8	217,310	#3 & #4 Semi-Annual Maintenance
June 2016	308,219	324,529	88.0	99.9	632,748	
May 2016	305,374	285,755	99.4	98.3	591,129	
Apr. 2016	576,692	527,450	96.1	91.0	1,104,142	
Mar. 2016	402,070	412,171	98.5	98.0	814,241	
Feb. 2016	381,652	397,539	99.5	86.6	779,191	
2017 Total	643,567	723,996			1,367,563	

Month	2012	2013	2014	2015	2016	2017
January	908,895	726,024	790,389	769,838	375,325	574,931
February	639,029	643,084	972,812	737,597	779,191	792,632
March	1,116,052	604,455	907,464	800,089	814,241	
April	1,011,719	847,275	974,896	1,021,111	1,104,142	
May	840,846	857,219	368,431	787,172	591,129	
June	527,743	328,075	315,023	354,839	632,748	
July	262,082	300,044	288,957	436,147	217,310	
August	335,647	153,513	216,998	451,332	351,572	
September	495,268	6,556	526,694	545,524	659,867	
October	783,001	0	832,535	802,013	780,431	
November	829,988	893,789	771,320	983,181	673,780	
December	589,497	562,010	744,957	656,492	1,053,834	
Total	8,339,767	5,922,044	7,710,476	8,345,335	8,033,570	1,367,563



Fun Fact: WMU recently hosted local students from the Youth Energy Summit. Or (YES) program. Topics included energy savings, waste reduction, and renewable energy.