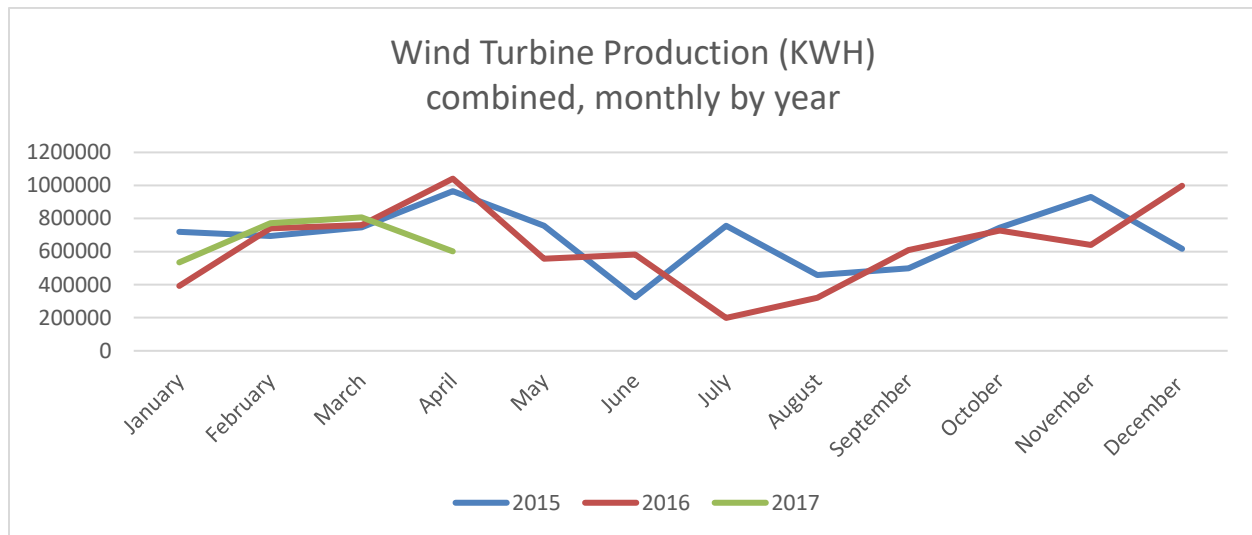




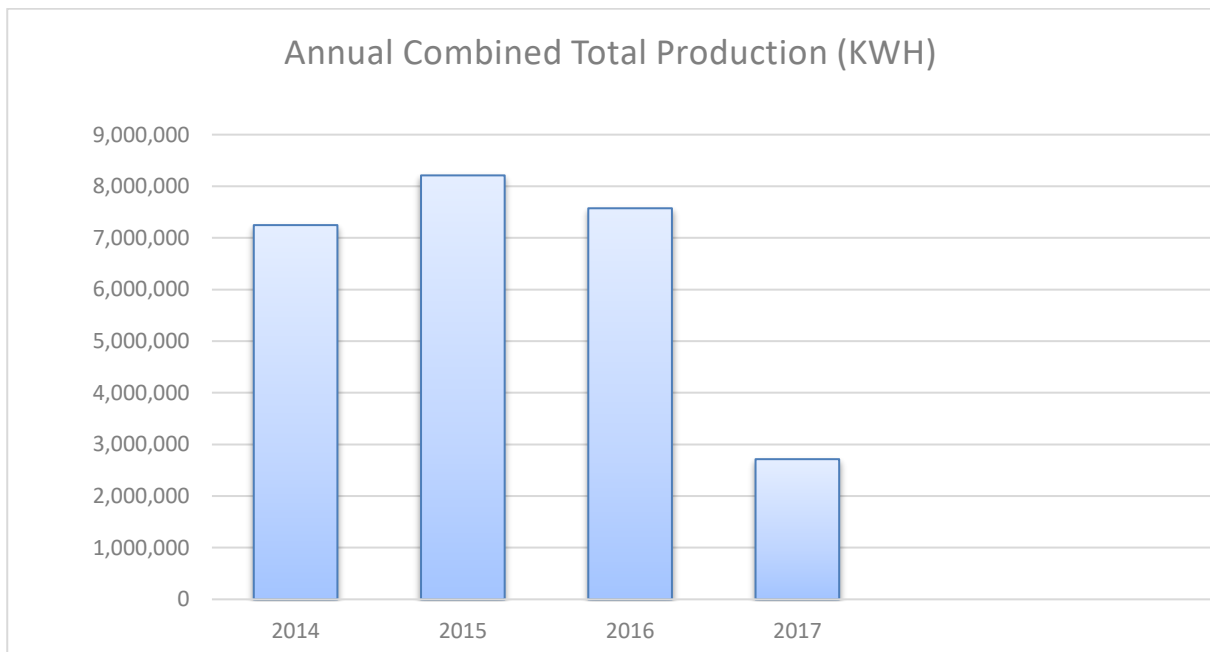
WILLMAR MUNICIPAL UTILITIES

April 2017 Wind Turbine Report



	Production (KWH)		Availability (%)		Total KWH	Major Outages
	#3	#4	#3	#4		
Apr. 2017	299,044	302,779	86.8	86.3	601,823	
Mar. 2017	409,026	397,910	88.0	91.3	806,936	
Feb. 2017	385,543	385,684	94.5	95.8	771,227	
Jan. 2017	236,582	298,285	77.4	91.3	534,867	
Dec. 2016					-	
Nov. 2016					-	
Oct. 2016					-	
Sep. 2016					-	
Aug. 2016					-	
July 2016					-	
June 2016					-	
May 2016					-	
Apr. 2016					-	
2017 Total	1,330,195	1,384,658			2,714,853	

Month	2014	2015	2016	2017		
January	745643	720369	393,477	534,867		
February	916093	695143	740,655	771,227		
March	848017	746045	761,028	806,936		
April	970215	965530	1,041,382	601,823		
May	340154	755889	557,947			
June	292744	324005	583,043			
July	264420	755889	199,043			
August	187490	457386	321,326			
September	480586	499215	609,004			
October	779328	744572	727,379			
November	728534	929609	640,522			
December	694570	616700	998,977			
Total	7,247,794	8,210,352	7,573,783	2,714,853		



Fun fact: As of May 2016, the United States is home to 48,000 operating wind turbines. These turbines are present across 40 states plus Puerto Rico.