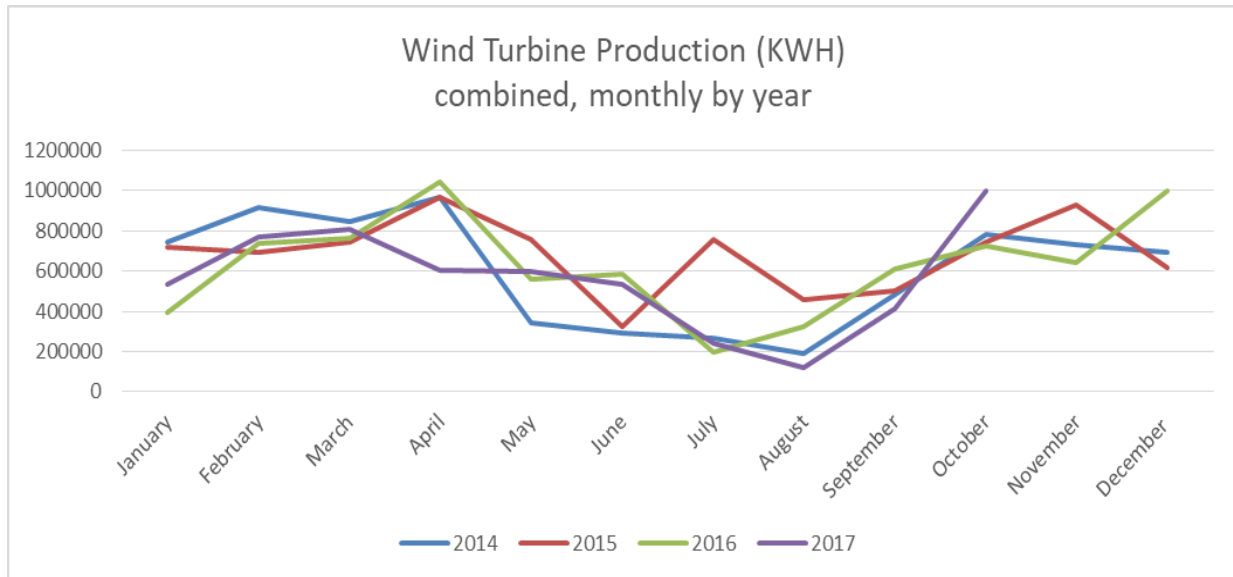




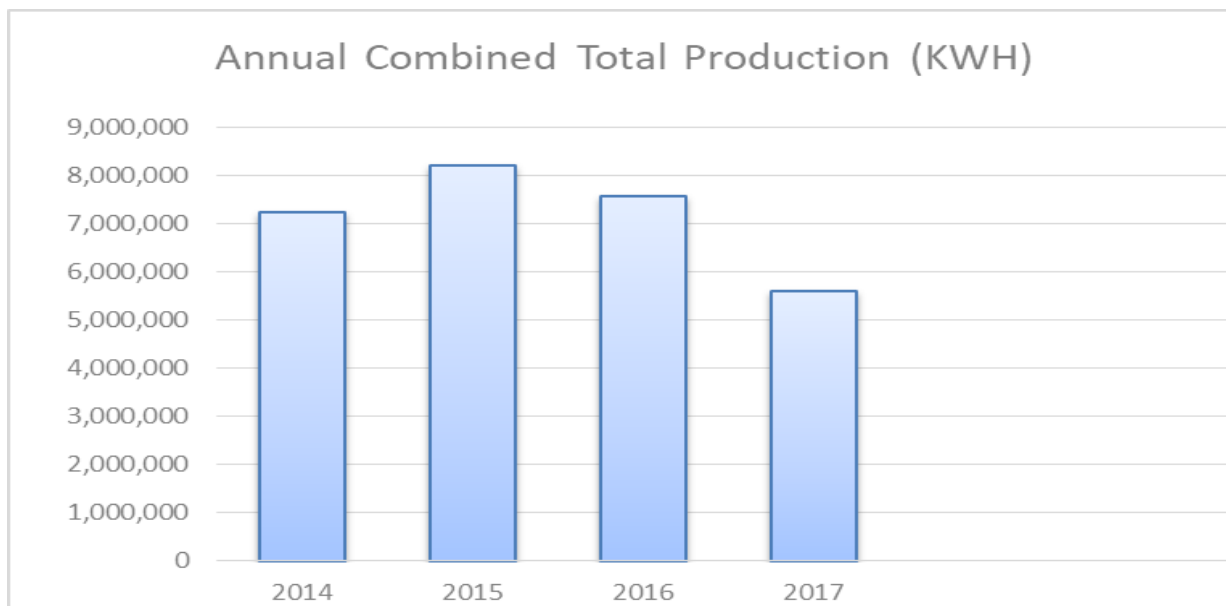
## WILLMAR MUNICIPAL UTILITIES

### October 2017 Wind Turbine Report



	Production (KWH)		Availability (%)		Total KWH	Major Outages
	#3	#4	#3	#4		
Sep. 2017	509,738	486,717	97.8	92.7	996,455	
Sep. 2017	195,376	217,373	62.2	67.4	412,749	#3 Control Software Malfunction #4 Hydraulic System Overheated
Aug. 2017	118,543	-	66.0	0.0	118,543	#3 Control Software Malfunction #4 Hydraulic System Overheated
July 2017	104,131	136,936	61.8	93.2	241,067	#3 Control Software Malfunction
June 2017	257,597	277,065	98.0	97.6	534,662	
May 2017	294,078	304,030	94.2	99.0	598,108	
Apr. 2017	299,044	302,779	86.8	86.3	601,823	
Mar. 2017	409,026	397,910	88.0	91.3	806,936	
Feb. 2017	385,543	385,684	94.5	95.8	771,227	
Jan. 2017	236,582	298,285	77.4	91.3	534,867	
Dec. 2016	467,905	531,073	92.9	93.4	998,977	
Nov. 2016	289,656	350,866	87.4	98.7	640,522	
Oct. 2016	324,972	402,407	87.7	98.6	727,379	
<b>2017 Total</b>	<b>2,809,658</b>	<b>2,806,779</b>			<b>5,616,437</b>	

Month	2014	2015	2016	2017		
January	745643	720369	393,477	534,867		
February	916093	695143	740,655	771,227		
March	848017	746045	761,028	806,936		
April	970215	965530	1,041,382	601,823		
May	340154	755889	557,947	598,108		
June	292744	324005	583,043	534,662		
July	264420	755889	199,043	241,067		
August	187490	457386	321,326	118,543		
September	480586	499215	609,004	412,749		
October	779328	744572	727,379	996,455		
November	728534	929609	640,522			
December	694570	616700	998,977			
<b>Total</b>	<b>7,247,794</b>	<b>8,210,352</b>	<b>7,573,783</b>	<b>5,616,437</b>		



Fun fact: The United States' wind power capacity surpassed [82 gigawatts at the end of 2016](#), making it the largest renewable generation capacity in the United States. That's enough electricity to power more than 20 million average American homes.