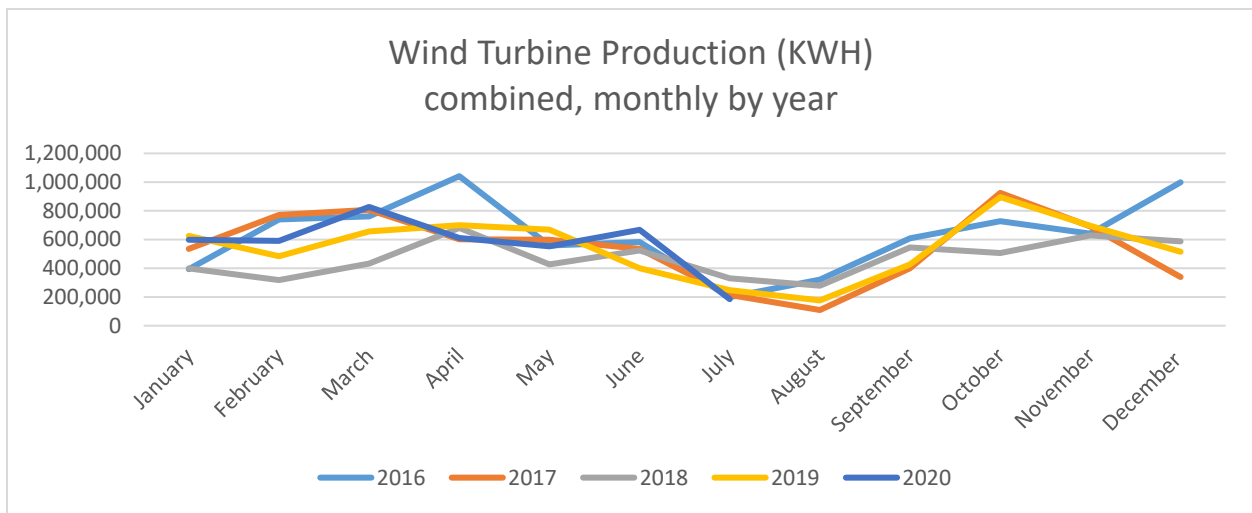




WILLMAR MUNICIPAL UTILITIES

July 2020 Wind Turbine Report

“Willmar Municipal Utilities will provide safe, reliable & quality utility services at competitive rates for their customers.”



	Production (KWH)		Availability (%)		Total KWH	Major Outages
	#3	#4	#3	#4		
July 2020	40,398	144,376	66.5	87.9	184,774	#3 Blade Repairs
June 2020	311,237	356,661	59.2	86.2	667,898	#3 Blade and Hub damage
May. 2020	274,916	277,606	97.7	94.7	552,522	
April. 2020	307,030	304,139	97.1	96.1	611,169	
Mar. 2020	406,025	421,180	96.2	99.6	827,205	
Feb. 2020	297,009	293,951	99.6	95.9	590,960	
Jan. 2020	292,889	305,779	99.7	97.3	598,668	
Dec. 2019	249,759	265,099	99.6	98.4	514,858	
Nov. 2019	347,262	347,746	98.9	99.4	695,008	#4 Blade Repairs
Oct. 2019	456,689	439,092	100.0	99.4	895,781	#4 Blade Repairs
Sept. 2019	266,430	160,430	97.5	99.8	426,860	
Aug. 2019	152,004	24,043	99.9	92.8	176,047	
July 2019	103,870	143,632	87.0	99.2	247,502	
2020 Total	1,929,504	2,103,692			4,033,196	

Month	2016	2017	2018	2019	2020
January	393,477	534,867	398,844	624,884	598,668
February	740,655	771,227	317,618	484,162	590,960
March	761,028	806,936	432,165	656,272	827,205
April	1,041,382	601,823	681,026	699,956	611,169
May	557,947	598,108	427,219	668,434	552,522
June	583,043	534,662	523,406	400,456	667,898
July	199,043	214,304	330,556	247,502	184,774
August	321,326	109,215	278,651	176,047	
September	609,004	400,210	545,469	426,860	
October	727,379	925,000	505,906	895,781	
November	640,522	690,847	628,416	695,008	
December	998,977	338,980	587,263	514,858	
Total	7,573,783	6,526,179	5,656,539	6,490,220	4,033,196

