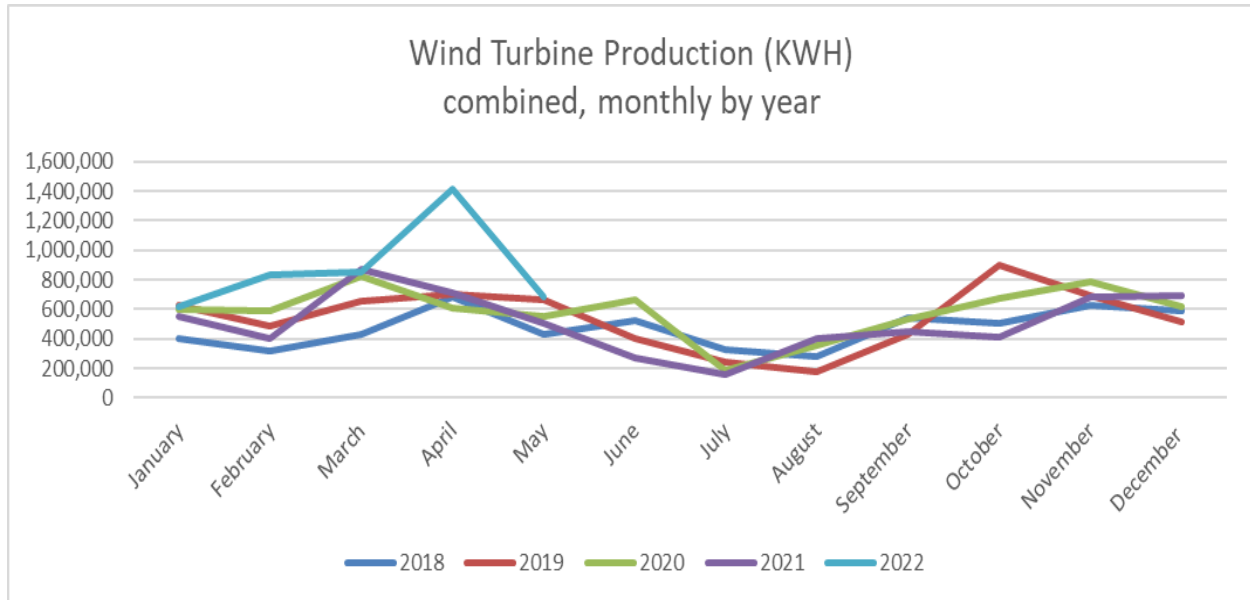




WILLMAR MUNICIPAL UTILITIES

May 2022 Wind Turbine Report

“Willmar Municipal Utilities will provide safe, reliable & quality utility services at competitive rates for their customers.”



	Production (KWH)		Availability (%)		Total	Major Outages
	#3	#4	#3	#4	KWH	
May 2022	334,016	346,667	94.3	90.7	680,683	
April 2022	682,796	733,316	95.8	98.8	1,416,112	
Mar 2022	423,397	428,473	98.4	97.2	851,870	
Feb 2022	386,126	442,660	92.9	95.9	828,786	
Jan 2022	191,089	428,633	67.8	92.3	619,722	Contactora and oil cooling fan failure
Dec 2021	356,542	337,412	94.2	88.8	693,954	
Nov 2021	241,863	443,307	50.1	99.9	685,170	#3 Gearbox speed sensor fault
Oct 2021	114,588	298,858	36.3	96.9	413,446	#3 Gearbox speed sensor fault
Sept 2021	177,347	267,383	68.3	90.6	444,730	#3 Gearbox speed sensor fault
Aug 2021	163,470	236,982	*70	100.0	400,452	#3 Yaw system fault
July 2021	58,742	97,830	70.7	84.3	156,572	Grid protection fault
June 2021	130,799	139,012	78.8	76.6	269,811	Grid protection fault
May 2021	247,196	261,855	99.8	99.0	509,051	
2022 Total	2,017,424	2,379,749			4,397,173	

Month	2018	2019	2020	2021	2022
January	398,844	624,884	598,668	551,509	619,722
February	317,618	484,162	590,960	397,869	828,786
March	432,165	656,272	827,205	866,500	851,870
April	681,026	699,956	611,169	709,639	1,416,112
May	427,219	668,434	552,522	509,051	680,683
June	523,406	400,456	667,898	269,811	
July	330,556	247,502	184,774	156,572	
August	278,651	176,047	352,244	400,452	
September	545,469	426,860	531,071	444,730	
October	505,906	895,781	675,543	413,446	
November	628,416	695,008	788,202	685,170	
December	587,263	514,858	613,308	693,954	
Total	5,656,539	6,490,220	6,993,564	6,098,703	4,397,173

