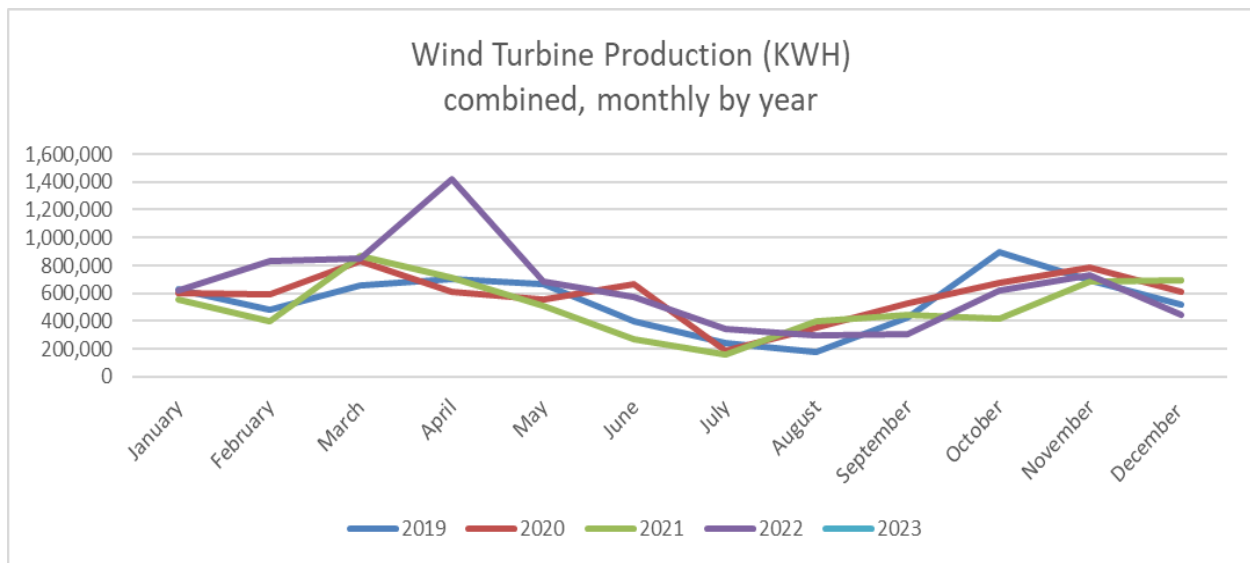




# WILLMAR MUNICIPAL UTILITIES

## January 2023 Wind Turbine Report

*“Willmar Municipal Utilities will provide safe, reliable & quality utility services at competitive rates for their customers.”*



	Production (KWH)		Availability (%)		Total	Major Outages
	#3	#4	#3	#4	KWH	
Jan 2023	229,638	-	99.3	13.5	229,638	#4 Blade pitch failure
Dec 2022	288,452	155,793	66.4	74.3	444,245	CT/PT Faults, Icing from storm
Nov 2022	314,419	418,704	76.6	97.4	733,123	#3 Breaker Failure
Oct 2022	272,341	344,073	69.1	92.7	616,414	#3 Annual Maintenance
Sept 2022	94,466	217,202	48.1	84.7	311,668	
Aug 2022	147,480	151,453	92.2	93.3	298,933	
July 2022	181,149	162,286	90.9	83.5	343,435	
June 2022	302,181	276,359	94.4	88.6	578,540	
May 2022	334,016	346,667	94.3	90.7	680,683	
April 2022	682,796	733,316	95.8	98.8	1,416,112	
Mar 2022	423,397	428,473	98.4	97.2	851,870	
Feb 2022	386,126	442,660	92.9	95.9	828,786	Contactora and oil cooling fan failure
Jan 2022	191,089	428,633	67.8	92.3	619,722	
2023 Total	229,638	-			229,638	

Month	2019	2020	2021	2022	2023
January	624,884	598,668	551,509	619,722	229,638
February	484,162	590,960	397,869	828,786	
March	656,272	827,205	866,500	851,870	
April	699,956	611,169	709,639	1,416,112	
May	668,434	552,522	509,051	680,683	
June	400,456	667,898	269,811	578,540	
July	247,502	184,774	156,572	343,435	
August	176,047	352,244	400,452	298,933	
September	426,860	531,071	444,730	311,668	
October	895,781	675,543	413,446	616,414	
November	695,008	788,202	685,170	733,123	
December	514,858	613,308	693,954	444,245	
<b>Total</b>	<b>6,490,220</b>	<b>6,993,564</b>	<b>6,098,703</b>	<b>7,723,531</b>	<b>229,638</b>

